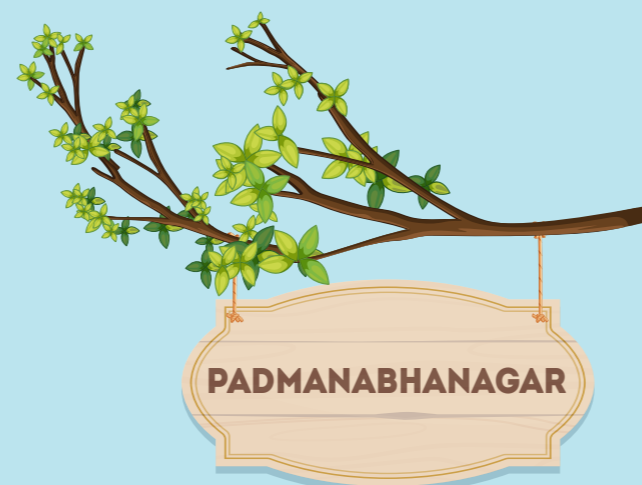


**True  
charm  
rises above  
the noise**



**Be surrounded by a lifestyle full of  
South Bengaluru charm.**

*Giving*  
**Padmanabhanagar**  
*a picturesque view*



Welcome to **Brigade Nanda Heights** at Padmanabhanagar. An elegantly designed, residential high-rise, towering 23 floors yet with the carefully curated amenities that make space to celebrate life's simple pleasures.

The unique design with vertical fins accentuates the height of the building and provides breathtaking views.

The awe-inspiring tower consists of 3 & 4-bedroom apartments that invite you to discover the real highs of life.

# LOCATION MAP



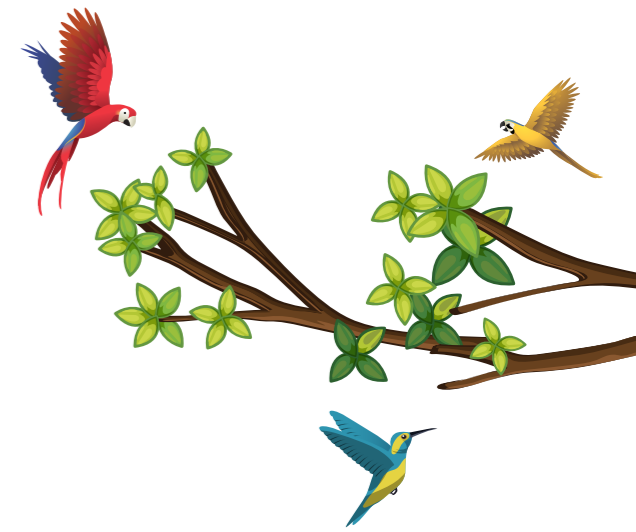
## Social Infrastructure:

- 10 mins. to Brigade Software Park
- 10 mins. to JP Nagar Metro Station
- Deccan International School is located just opposite to the project
- Brigade School and other schools of repute are in close proximity
- Sagar and Motherhood, among other hospitals, are in close proximity
- Central, Vega City Mall, Gopalan Arcade and Gopalan Innovation Mall are in close proximity

## Entertainment Attractions/Famous Eateries:

- 15 mins. to Bugle Rock
- 15 mins. to Gandhi Bazaar
- 15 mins. to Vidyarthi Bhavan
- 10 mins. to Brahmins Café

# Seamlessly connected to the city





# MASTER PLAN



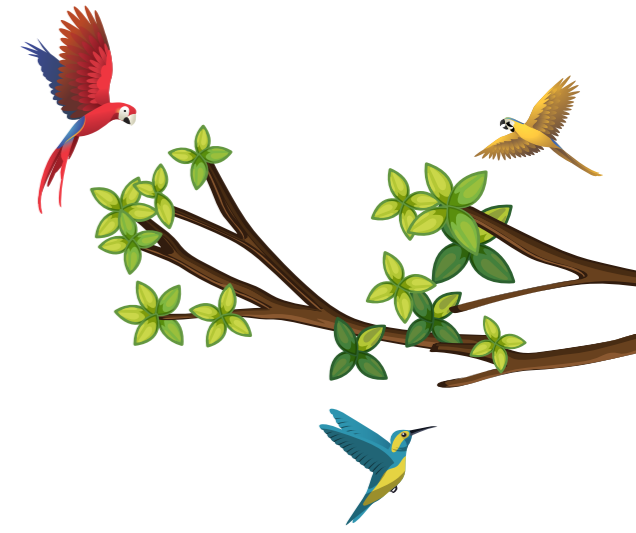
## Legends:

1. Arrival Plaza
2. Driveway
3. Jogging Track
4. Waiting Area
5. Visitor's Parking
6. Car Parking
7. Stepping Stone Walkway
8. Drop off Plaza
9. Drop off Feature
10. Yoga Lawn
11. Outdoor Gym
12. Pergola with Creepers
13. Kids' Play Area
14. Basketball Dribbling Court
15. Skating Rink
16. Elders Chitchat Corner
17. Swimming Pool
18. Kids' Pool
19. Pool Deck
20. Pool Change Rooms
21. Cricket Practice Net
22. Secondary Entry / Exit Plaza



The information depicted herein viz., master plans, floor plans, furniture layout, fittings, illustrations, specifications, designs, dimensions, rendered views, colours, amenities and facilities etc., are subject to change without notifications as may be required by the relevant authorities or the Developer's architect, and cannot form part of an offer or contract. Whilst every care is taken in providing this information, the Developer cannot be held liable for variations. All illustrations and pictures are artist's impression only. The information is subject to variations, additions, deletions, substitutions and modifications as may be recommended by the company's architect and/or the relevant approving authorities. The Developer is wholly exempt from any liability on account of any claim in this regard. (1 square metre = 10.764 square feet). E & OE. All dimensions and calculations are done in metric system (M/Sq.m), and imperial system (Ft/Sq.ft) shown is for reference only. All dimensions indicated in the drawing are from unfinished surfaces, excluding plaster thickness and tile thickness.

# A Holistic approach to lifestyle



The tower exudes a rare sense of completeness with the following amenities:



Gymnasium



Indoor Activity Area



Multi-purpose Hall



Table Tennis



Yoga Lawn



Outdoor Gym



Skating Rink



Elders Chitchat Corner



Basketball Dribbling Court



Kids' Play Area



Swimming Pool



Cricket Practice Net



Jogging Track



**NUMBERING**  
*Plan*



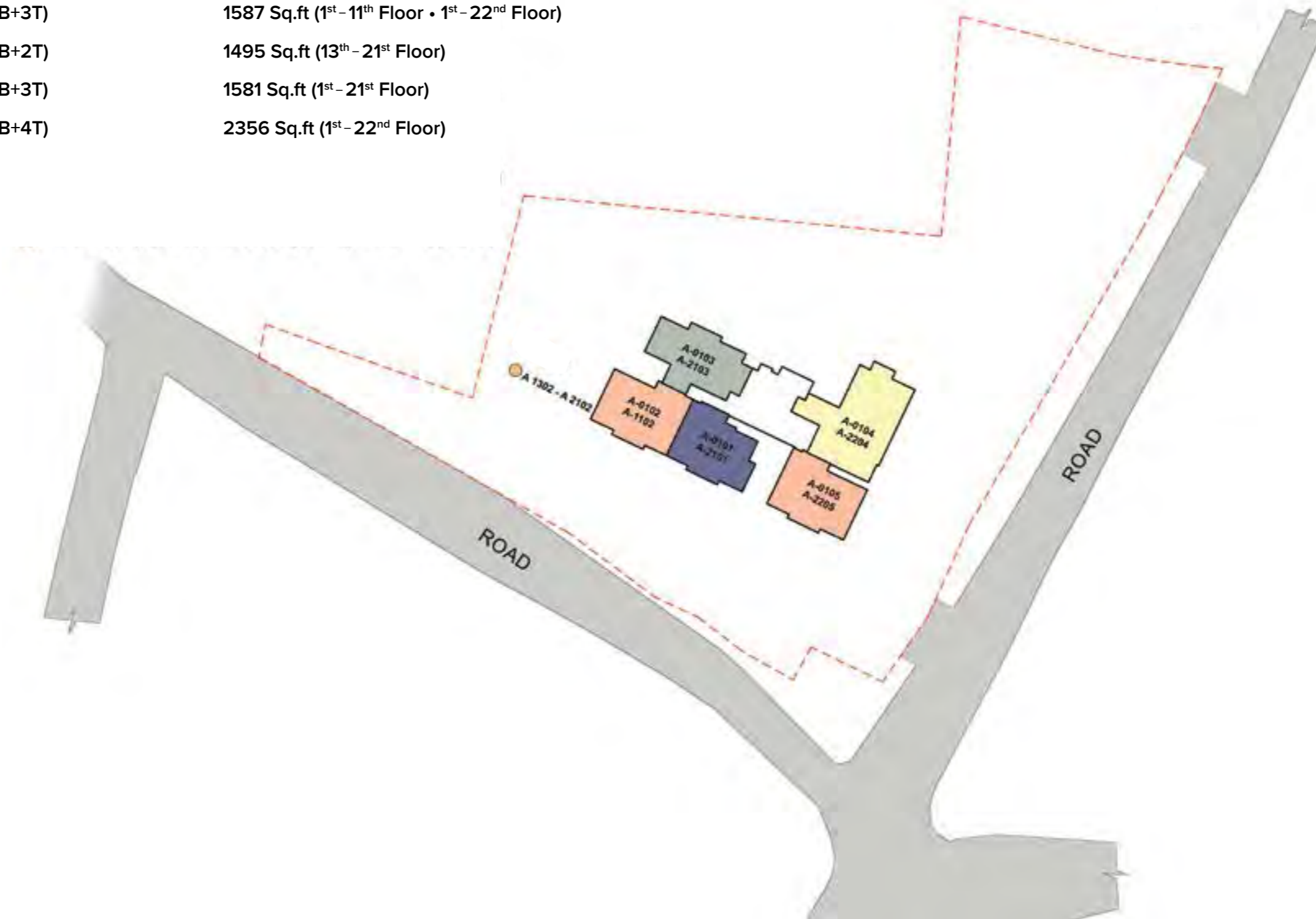
# NUMBERING PLAN



Not to scale

## LEGEND

<span style="color: blue;">●</span>	TYPE - A	(3B+2T)	1498 Sq.ft (1 <sup>st</sup> - 21 <sup>st</sup> Floor)
<span style="color: orange;">●</span>	TYPE - B	(3B+3T)	1587 Sq.ft (1 <sup>st</sup> - 11 <sup>th</sup> Floor • 1 <sup>st</sup> - 22 <sup>nd</sup> Floor)
<span style="color: gold;">●</span>	TYPE - B1	(3B+2T)	1495 Sq.ft (13 <sup>th</sup> - 21 <sup>st</sup> Floor)
<span style="color: grey;">●</span>	TYPE - C	(3B+3T)	1581 Sq.ft (1 <sup>st</sup> - 21 <sup>st</sup> Floor)
<span style="color: yellow;">●</span>	TYPE - D	(4B+4T)	2356 Sq.ft (1 <sup>st</sup> - 22 <sup>nd</sup> Floor)



The information depicted herein viz., master plans, floor plans, furniture layout, fittings, illustrations, specifications, designs, dimensions, rendered views, colours, amenities and facilities etc., are subject to change without notifications as may be required by the relevant authorities or the Developer's architect, and cannot form part of an offer or contract. Whilst every care is taken in providing this information, the Developer cannot be held liable for variations. All illustrations and pictures are artist's impression only. The information is subject to variations, additions, deletions, substitutions and modifications as may be recommended by the company's architect and/or the relevant approving authorities. The Developer is wholly exempt from any liability on account of any claim in this regard. (1 square metre = 10.764 square feet). E & OE. All dimensions and calculations are done in metric system (M/Sq.m), and imperial system (Ft/Sq.ft) shown is for reference only. All dimensions indicated in the drawing are from unfinished surfaces, excluding plaster thickness and tile thickness.





**FLOOR**  
*Plans*



# BLOCK - A

## 1<sup>st</sup> Floor

- Type - A (3B+2T) 1498 Sq.ft.
- Type - B (3B+3T) 1587 Sq.ft.
- Type - C (3B+3T) 1581 Sq.ft.
- Type - D (4B+4T) 2356 Sq.ft.



The information depicted herein viz., master plans, floor plans, furniture layout, fittings, illustrations, specifications, designs, dimensions, rendered views, colours, amenities and facilities etc., are subject to change without notifications as may be required by the relevant authorities or the Developer's architect, and cannot form part of an offer or contract. Whilst every care is taken in providing this information, the Developer cannot be held liable for variations. All illustrations and pictures are artist's impression only. The information is subject to variations, additions, deletions, substitutions and modifications as may be recommended by the company's architect and/or the relevant approving authorities. The Developer is wholly exempt from any liability on account of any claim in this regard. (1 square metre = 10.764 square feet). E & OE. All dimensions and calculations are done in metric system (M/Sq.m), and imperial system (Ft/Sq.ft) shown is for reference only. All dimensions indicated in the drawing are from unfinished surfaces, excluding plaster thickness and tile thickness.





# BLOCK - A

## 2<sup>nd</sup> Floor

- Type - A (3B+2T) 1498 Sq.ft.
- Type - B (3B+3T) 1587 Sq.ft.
- Type - C (3B+3T) 1581 Sq.ft.
- Type - D (4B+4T) 2356 Sq.ft.



The information depicted herein viz., master plans, furniture layout, fittings, illustrations, specifications, designs, dimensions, rendered views, colours, amenities and facilities etc., are subject to change without notifications as may be required by the relevant authorities or the Developer's architect, and cannot form part of an offer or contract. Whilst every care is taken in providing this information, the Developer cannot be held liable for variations. All illustrations and pictures are artist's impression only. The information is subject to variations, additions, deletions, substitutions and modifications as may be recommended by the company's architect and/or the relevant approving authorities. The Developer is wholly exempt from any liability on account of any claim in this regard. (1 square metre = 10.764 square feet). E & OE. All dimensions and calculations are done in metric system (M/Sq.m), and imperial system (Ft/Sq.ft) shown is for reference only. All dimensions indicated in the drawing are from unfinished surfaces, excluding plaster thickness and tile thickness.





# BLOCK - A

## 3<sup>rd</sup> to 11<sup>th</sup> Floor

- Type - A (3B+2T) 1498 Sq.ft.
- Type - B (3B+3T) 1587 Sq.ft.
- Type - C (3B+3T) 1581 Sq.ft.
- Type - D (4B+4T) 2356 Sq.ft.



The information depicted herein viz., master plans, floor plans, furniture layout, fittings, illustrations, specifications, designs, dimensions, rendered views, colours, amenities and facilities etc., are subject to change without notifications as may be required by the relevant authorities or the Developer's architect, and cannot form part of an offer or contract. Whilst every care is taken in providing this information, the Developer cannot be held liable for variations. All illustrations and pictures are artist's impression only. The information is subject to variations, additions, deletions, substitutions and modifications as may be recommended by the company's architect and/or the relevant approving authorities. The Developer is wholly exempt from any liability on account of any claim in this regard. (1 square metre = 10.764 square feet). E & OE. All dimensions and calculations are done in metric system (M/Sq.m), and imperial system (Ft/Sq.ft) shown is for reference only. All dimensions indicated in the drawing are from unfinished surfaces, excluding plaster thickness and tile thickness.





# BLOCK - A

## 12<sup>th</sup> Floor

- Type - A (3B+2T) 1498 Sq.ft.
- Type - B (3B+3T) 1587 Sq.ft.
- Type - B1 (3B+2T+Open Terrace) 1495 Sq.ft.
- Type - C (3B+3T) 1581 Sq.ft.
- Type - D (4B+4T) 2356 Sq.ft.



The information depicted herein viz., master plans, floor plans, furniture layout, fittings, illustrations, specifications, designs, dimensions, rendered views, colours, amenities and facilities etc., are subject to change without notifications as may be required by the relevant authorities or the Developer's architect, and cannot form part of an offer or contract. Whilst every care is taken in providing this information, the Developer cannot be held liable for variations. All illustrations and pictures are artist's impression only. The information is subject to variations, additions, deletions, substitutions and modifications as may be recommended by the company's architect and/or the relevant approving authorities. The Developer is wholly exempt from any liability on account of any claim in this regard. (1 square metre = 10.764 square feet). E & OE. All dimensions and calculations are done in metric system (M/Sq.m), and imperial system (Ft/Sq.ft) shown is for reference only. All dimensions indicated in the drawing are from unfinished surfaces, excluding plaster thickness and tile thickness.

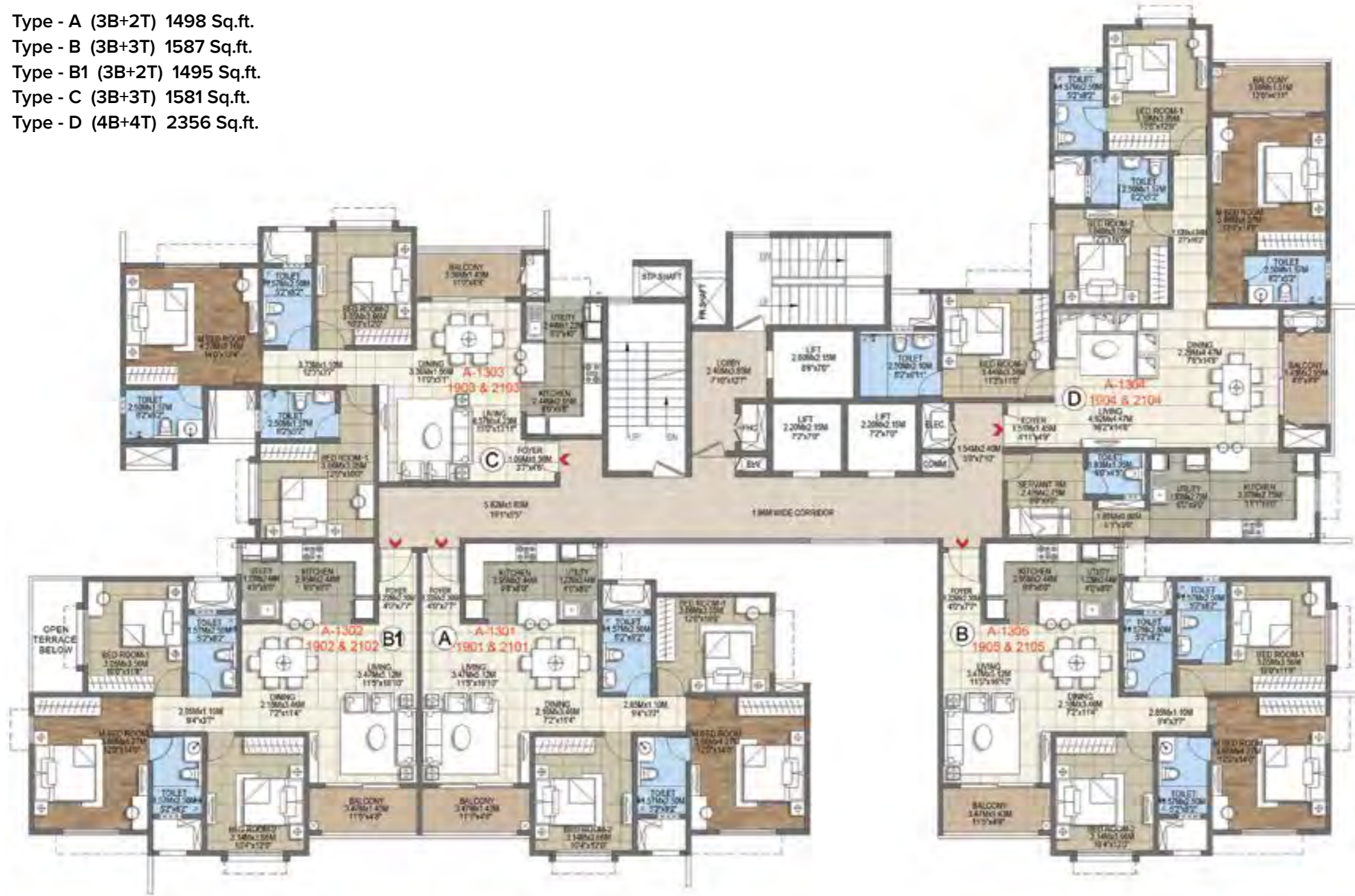




# BLOCK - A

## 13<sup>th</sup> to 19<sup>th</sup> & 21<sup>st</sup> Floor

- Type - A (3B+2T) 1498 Sq.ft.
- Type - B (3B+3T) 1587 Sq.ft.
- Type - B1 (3B+2T) 1495 Sq.ft.
- Type - C (3B+3T) 1581 Sq.ft.
- Type - D (4B+4T) 2356 Sq.ft.



The information depicted herein viz., master plans, floor plans, furniture layout, fittings, illustrations, specifications, dimensions, rendered views, colours, amenities and facilities etc., are subject to change without notifications as may be required by the relevant authorities or the Developer's architect, and cannot form part of an offer or contract. Whilst every care is taken in providing this information, the Developer cannot be held liable for variations. All illustrations and pictures are artist's impression only. The information is subject to variations, additions, deletions, substitutions and modifications as may be recommended by the company's architect and/or the relevant approving authorities. The Developer is wholly exempt from any liability on account of any claim in this regard. (1 square metre = 10.764 square feet). E & OE. All dimensions and calculations are done in metric system (M/Sq.m), and imperial system (Ft/Sq.ft) shown is for reference only. All dimensions indicated in the drawing are from unfinished surfaces, excluding plaster thickness and tile thickness.





# BLOCK - A

## 20<sup>th</sup> Floor

- Type - A (3B+2T) 1498 Sq.ft.
- Type - B (3B+3T) 1587 Sq.ft.
- Type - B1 (3B+2T) 1495 Sq.ft.
- Type - C (3B+3T) 1581 Sq.ft.
- Type - D (4B+4T) 2356 Sq.ft.



The information depicted herein viz., master plans, floor plans, furniture layout, fittings, illustrations, specifications, designs, amenities and facilities etc., are subject to change without notifications as may be required by the relevant authorities or the Developer's architect, and cannot form part of an offer or contract. Whilst every care is taken in providing this information, the Developer cannot be held liable for variations. All illustrations and pictures are artist's impression only. The information is subject to variations, additions, deletions, substitutions and modifications as may be recommended by the company's architect and/or the relevant approving authorities. The Developer is wholly exempt from any liability on account of any claim in this regard. (1 square metre = 10.764 square feet). E & OE. All dimensions and calculations are done in metric system (M/Sq.m), and imperial system (Ft/Sq.ft) shown is for reference only. All dimensions indicated in the drawing are from unfinished surfaces, excluding plaster thickness and tile thickness.





# BLOCK - A

## 22<sup>nd</sup> Floor

Type - B (3B+3T) 1587 Sq.ft.  
 Type - D (4B+4T) 2356 Sq.ft.



The information depicted herein viz., master plans, floor plans, furniture layout, fittings, illustrations, specifications, designs, dimensions, rendered views, colours, amenities and facilities etc., are subject to change without notifications as may be required by the relevant authorities or the Developer's architect, and cannot form part of an offer or contract. Whilst every care is taken in providing this information, the Developer cannot be held liable for variations. All illustrations and pictures are artist's impression only. The information is subject to variations, additions, deletions, substitutions and modifications as may be recommended by the company's architect and/or the relevant approving authorities. The Developer is wholly exempt from any liability on account of any claim in this regard. (1 square metre = 10.764 square feet). E & OE. All dimensions and calculations are done in metric system (M/Sq.m), and imperial system (Ft/Sq.ft) shown is for reference only. All dimensions indicated in the drawing are from unfinished surfaces, excluding plaster thickness and tile thickness.





**BLOCK - A**  
23<sup>rd</sup> Floor



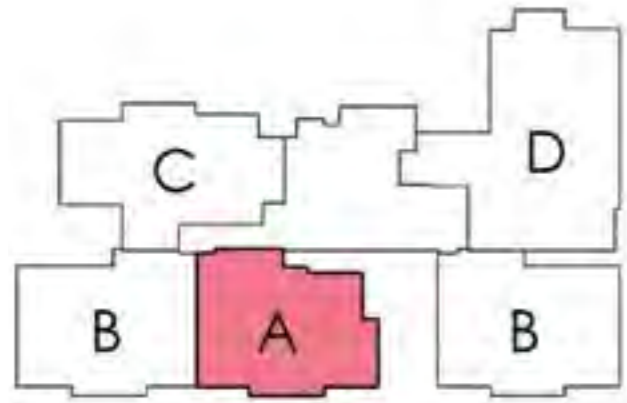
The information depicted herein viz., master plans, floor plans, furniture layout, fittings, illustrations, specifications, designs, dimensions, rendered views, colours, amenities and facilities etc., are subject to change without notifications as may be required by the relevant authorities or the Developer's architect, and cannot form part of an offer or contract. Whilst every care is taken in providing this information, the Developer cannot be held liable for variations. All illustrations and pictures are artist's impression only. The information is subject to variations, additions, deletions, substitutions and modifications as may be recommended by the company's architect and/or the relevant approving authorities. The Developer is wholly exempt from any liability on account of any claim in this regard. (1 square metre = 10.764 square feet). E & OE. All dimensions and calculations are done in metric system (M/Sq.m), and imperial system (Ft/Sq.ft) shown is for reference only. All dimensions indicated in the drawing are from unfinished surfaces, excluding plaster thickness and tile thickness.





UNIT  
*Plans*

 **TYPE A**  
**3 BEDROOMS**  
**+ 2 TOILETS**



**CLUSTER PLAN**



**KEY PLAN**



**SUPER BUILT-UP AREA**

1498 Sq.ft. / 139.13 Sq.m.

**CARPET AREA**

997 Sq.ft. / 92.58 Sq.m.

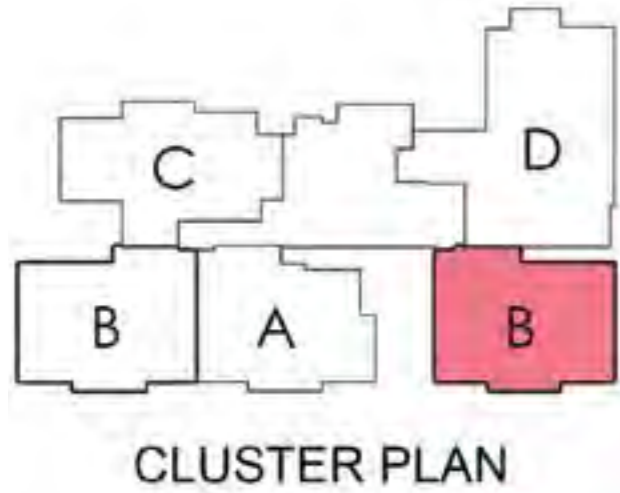
**BALCONY**

51 Sq.ft. / 4.77 Sq.m.

The information depicted herein viz., master plans, floor plans, furniture layout, fittings, illustrations, specifications, designs, dimensions, rendered views, colours, amenities and facilities etc., are subject to change without notifications as may be required by the relevant authorities or the Developer's architect, and cannot form part of an offer or contract. Whilst every care is taken in providing this information, the Developer cannot be held liable for variations. All illustrations and pictures are artist's impression only. The information is subject to variations, additions, deletions, substitutions and modifications as may be recommended by the company's architect and/or the relevant approving authorities. The Developer is wholly exempt from any liability on account of any claim in this regard. (1 square metre = 10.764 square feet). E & OE. All dimensions and calculations are done in metric system (M/Sq.m), and imperial system (Ft/Sq.ft) shown is for reference only. All dimensions indicated in the drawing are from unfinished surfaces, excluding plaster thickness and tile thickness.



 **TYPE B**  
  
**3 BEDROOMS**  
**+ 3 TOILETS**



**SUPER BUILT-UP AREA**

1587 Sq.ft. / 147.47 Sq.m.

**CARPET AREA**

1062 Sq.ft. / 98.62 Sq.m.

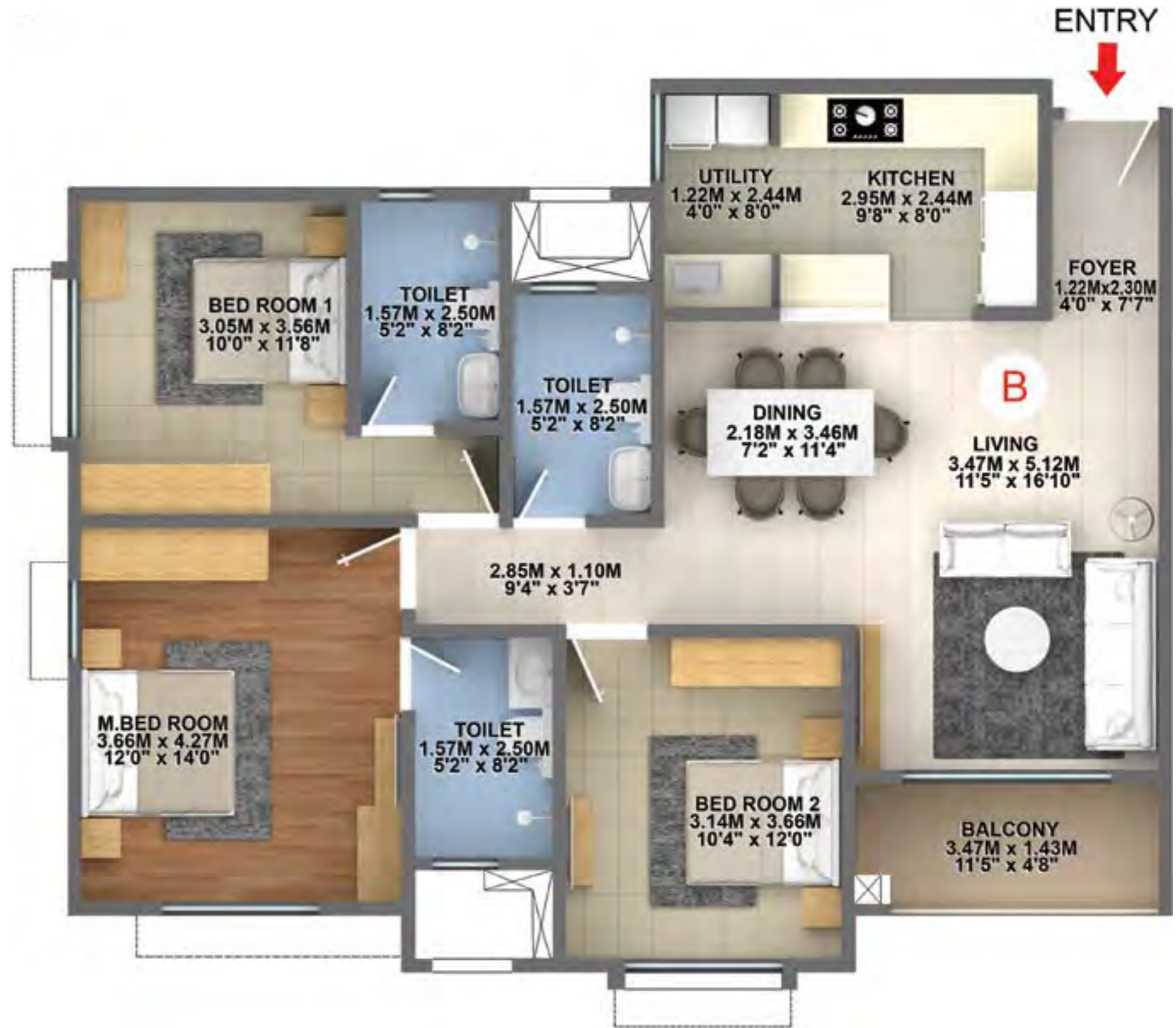
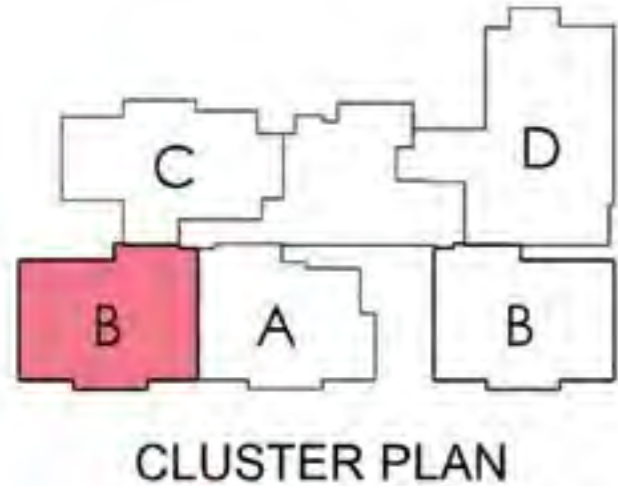
**BALCONY**

51 Sq.ft. / 4.77 Sq.m.

The information depicted herein viz., master plans, floor plans, furniture layout, fittings, illustrations, specifications, designs, dimensions, rendered views, colours, amenities and facilities etc., are subject to change without notifications as may be required by the relevant authorities or the Developer's architect, and cannot form part of an offer or contract. Whilst every care is taken in providing this information, the Developer cannot be held liable for variations. All illustrations and pictures are artist's impression only. The information is subject to variations, additions, deletions, substitutions and modifications as may be recommended by the company's architect and/or the relevant approving authorities. The Developer is wholly exempt from any liability on account of any claim in this regard. (1 square metre = 10.764 square feet). E & OE. All dimensions and calculations are done in metric system (M/Sq.m), and imperial system (Ft/Sq.ft) shown is for reference only. All dimensions indicated in the drawing are from unfinished surfaces, excluding plaster thickness and tile thickness.



 **TYPE B**  
**3 BEDROOMS**  
**+ 3 TOILETS**



**SUPER BUILT-UP AREA**

**1587 Sq.ft. / 147.47 Sq.m.**

**CARPET AREA**

**1062 Sq.ft. / 98.62 Sq.m.**

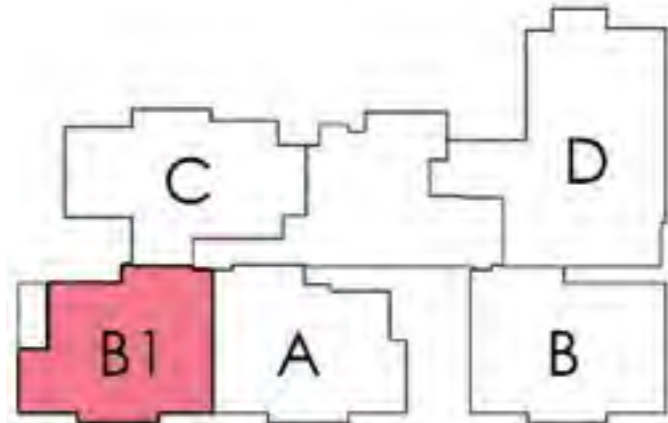
**BALCONY**

**51 Sq.ft. / 4.77 Sq.m.**

The information depicted herein viz., master plans, floor plans, furniture layout, fittings, illustrations, specifications, designs, dimensions, rendered views, colours, amenities and facilities etc., are subject to change without notifications as may be required by the relevant authorities or the Developer's architect, and cannot form part of an offer or contract. Whilst every care is taken in providing this information, the Developer cannot be held liable for variations. All illustrations and pictures are artist's impression only. The information is subject to variations, additions, deletions, substitutions and modifications as may be recommended by the company's architect and/or the relevant approving authorities. The Developer is wholly exempt from any liability on account of any claim in this regard. (1 square metre = 10.764 square feet). E & OE. All dimensions and calculations are done in metric system (M/Sq.m), and imperial system (Ft/Sq.ft) shown is for reference only. All dimensions indicated in the drawing are from unfinished surfaces, excluding plaster thickness and tile thickness.



 **TYPE B1**  
**3 BEDROOMS**  
**+ 2 TOILETS**



**CLUSTER PLAN**



**KEY PLAN**



**SUPER BUILT-UP AREA**

1495 Sq.ft. / 138.88 Sq.m.

**CARPET AREA**

992 Sq.ft. / 92.18 Sq.m.

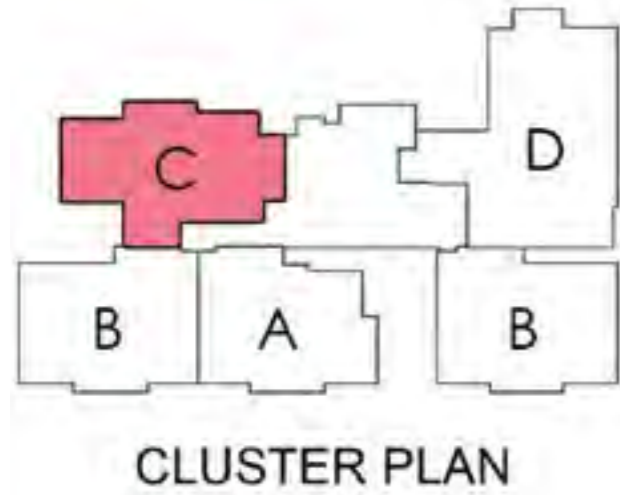
**BALCONY**

51 Sq.ft. / 4.77 Sq.m.

The information depicted herein viz., master plans, floor plans, furniture layout, fittings, illustrations, specifications, designs, dimensions, rendered views, colours, amenities and facilities etc., are subject to change without notifications as may be required by the relevant authorities or the Developer's architect, and cannot form part of an offer or contract. Whilst every care is taken in providing this information, the Developer cannot be held liable for variations. All illustrations and pictures are artist's impression only. The information is subject to variations, additions, deletions, substitutions and modifications as may be recommended by the company's architect and/or the relevant approving authorities. The Developer is wholly exempt from any liability on account of any claim in this regard. (1 square metre = 10.764 square feet). E & OE. All dimensions and calculations are done in metric system (M/Sq.m), and imperial system (Ft/Sq.ft) shown is for reference only. All dimensions indicated in the drawing are from unfinished surfaces, excluding plaster thickness and tile thickness.



**TYPE C**  
**3 BEDROOMS**  
**+ 3 TOILETS**



**SUPER BUILT-UP AREA**

1581 Sq.ft. / 146.87 Sq.m.

**CARPET AREA**

1049 Sq.ft. / 97.49 Sq.m.

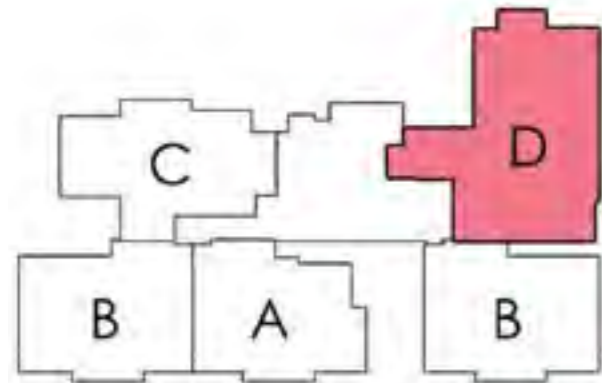
**BALCONY**

52 Sq.ft. / 4.80 Sq.m.

The information depicted herein viz., master plans, floor plans, furniture layout, fittings, illustrations, specifications, designs, dimensions, rendered views, colours, amenities and facilities etc., are subject to change without notifications as may be required by the relevant authorities or the Developer's architect, and cannot form part of an offer or contract. Whilst every care is taken in providing this information, the Developer cannot be held liable for variations. All illustrations and pictures are artist's impression only. The information is subject to variations, additions, deletions, substitutions and modifications as may be recommended by the company's architect and/or the relevant approving authorities. The Developer is wholly exempt from any liability on account of any claim in this regard. (1 square metre = 10.764 square feet). E & OE. All dimensions and calculations are done in metric system (M/Sq.m), and imperial system (Ft/Sq.ft) shown is for reference only. All dimensions indicated in the drawing are from unfinished surfaces, excluding plaster thickness and tile thickness.



 **TYPE D**  
**4 BEDROOMS**  
**+ 4 TOILETS**  
**+ MAID'S ROOM**



CLUSTER PLAN



KEY PLAN



**SUPER BUILT-UP AREA**

**2356 Sq.ft. / 218.87 Sq.m.**

**CARPET AREA**

**1548 Sq.ft. / 143.80 Sq.m.**

**BALCONY**

**103 Sq.ft. / 9.55 Sq.m.**

The information depicted herein viz., master plans, floor plans, furniture layout, fittings, illustrations, specifications, designs, dimensions, rendered views, colours, amenities and facilities etc., are subject to change without notifications as may be required by the relevant authorities or the Developer's architect, and cannot form part of an offer or contract. Whilst every care is taken in providing this information, the Developer cannot be held liable for variations. All illustrations and pictures are artist's impression only. The information is subject to variations, additions, deletions, substitutions and modifications as may be recommended by the company's architect and/or the relevant approving authorities. The Developer is wholly exempt from any liability on account of any claim in this regard. (1 square metre = 10.764 square feet). E & OE. All dimensions and calculations are done in metric system (M/Sq.m), and imperial system (Ft/Sq.ft) shown is for reference only. All dimensions indicated in the drawing are from unfinished surfaces, excluding plaster thickness and tile thickness.

# SPECIFICATIONS

## COMMON AREA FLOORING

**Waiting Lounge / Reception / GF Lobby:**

Granite / Vitrified Tiles

**Staircase:** Cement Step Tiles

**Lift Lobby and Corridors:**

Vitrified / Industrial Tiles

**Terrace:** Clay Tiles / Industrial Tiles

## UNIT FLOORING

**Living / Dining / Family / Foyer / Bedrooms / Kitchen /**

**Utility:** Vitrified Tiles

**Balcony:** Anti-skid Ceramic Tiles

**Toilets:** Ceramic Tiles

**Maid's Room and Toilet:** Ceramic Tiles

## WALL DADO

**Kitchen:** Provision for Modular Kitchen

(No Granite Slab / No Dado will be provided)

**Toilets:** Ceramic Tiles

## KITCHEN

**a. Counter:**

Provision for Modular Kitchen  
(No Counter will be provided)

**b. Plumbing / Electrical:**

**Plumbing:** Water Inlet / Drain Provision for  
Water Purifier / Sink, Washing Machine and Dishwasher

**Electrical:** Common Electrical Point for Washing  
Machine and Dishwasher

## TOILETS

**CP Fittings:** Grohe or equivalent

**Sanitary Fixtures:** Wall Mounted EWC  
(Duravit / equivalent)

## DOORS

**Main Door / Internal Doors:** Hardwood Frame with  
flush shutter

**Balcony Door:** UPVC / Aluminium

## WINDOWS

UPVC / Aluminium

## PAINTING & FINISHES

**a. Exterior Finish:** External Grade Emulsion

**b. Unit Internal Ceilings:** Emulsion Paint / OBD

**c. Unit Walls:** Emulsion Paint

## ELECTRICAL

**Units - 3 BHK:** 3B+3T - 6kW / 3B+2T - 5kW

**Units - 4 BHK:** 8kW

**Switches:** Modular Switches - Anchor Roma or equivalent

**DG Backup\*:** 100% DG Backup for Units and Common Area  
(\*at additional cost)

## MISCELLANEOUS

**Vertical Transportation:** Lifts provided as per design

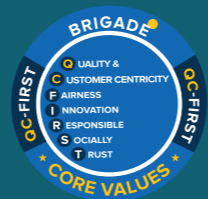




**BRIGADE**

Building Positive Experiences

Our Core Values



Founders



To UPGRADE TO BRIGADE, reach us on 1800 102 9977 • email: [salesenquiry@brigadegroup.com](mailto:salesenquiry@brigadegroup.com)

**Site Marketing Office:**  
Brigade Nanda Heights  
Chikkalasandra Village,  
Subramanyapura Main Road, Uttarahalli Hobli,  
Bengaluru – 560 061

**Registered & Corporate Office:**  
29<sup>th</sup> & 30<sup>th</sup> Floor,  
WTC Bangalore@Brigade Gateway Campus,  
Dr. Rajkumar Road, Malleswaram-Rajajinagar,  
Bengaluru - 560 055

**Dubai:**  
Brigade Enterprises Ltd.,  
708, Atrium Centre, Bank Street, Bur Dubai  
Ph: +971 43555504  
[dubaisales@brigadegroup.com](mailto:dubaisales@brigadegroup.com)



Offices also at: CHENNAI • HYDERABAD • MYSURU

NANDA HEIGHTS-A3 PRESENTER-VER1-JUNE2022